

PT80-12

12Volt 80Ah

Specifications

Nominal Voltage(V) 12V

Nominal Capacity

10 hour rate (10A	to	10.80V)	80Ah
5 hour rate (17A	to	10.20V)	73.6Ah
1 hour rate (60A	to	9.60V)	68Ah

Weight Approx. 23kg(50.7Lbs.)

Internal Resistance (at 1KHz) Approx. 6mΩ

Maximum Discharge Current for

5 seconds: 1480^A

Charging Methods at 25°C (77° F)

Cycle use:

Charging Voltage 14.4 to 15.0V

Coefficient -5.0mV/°C/cell

Maximum Charging Current : 24A

Standby use:

Float Charging Voltage 13.5 to 13.8V

Coefficient -3.0mV/°C/cell

Operating Temperature Range

Charge -15°C (5°F) to 40°C (104°F)

Discharge -15°C (5°F) to 50°C (122°F)

Storage -15°C (5°F) to 40°C (104°F)

Design Life 12 years

Charge Retention (shelf life) at 20°C (68° F)

1 month 98%

3 month 94%

6 month 85%

Case Material ABS UL94 HB

Option: Flammability resistance of (UL94 V-0)

Terminal F18

Description of torque value of hard ware for the terminals:

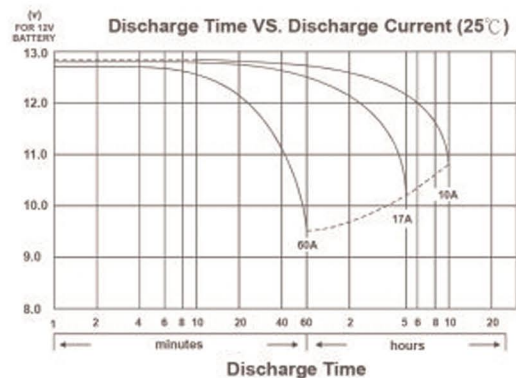
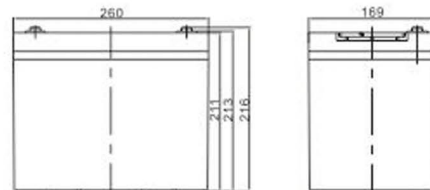
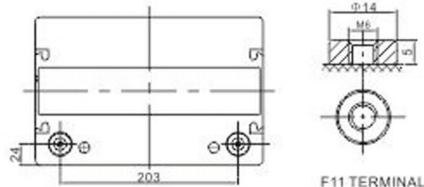
Recommended torque value **M8: 7 N-m (71kgf-cm)**

Maximum allowable torque value **M8: 9 N-m (92kgf-cm)**

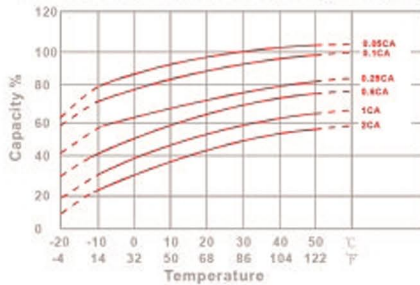


Dimensions

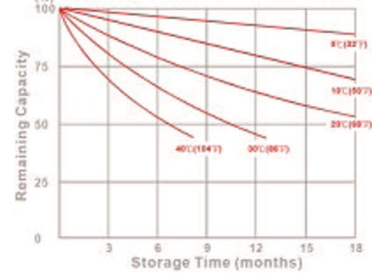
mm(inch)



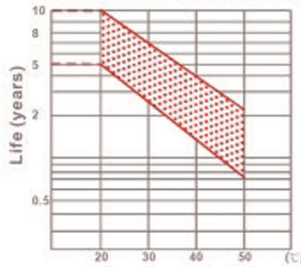
Effect of Temperature on Capacity 25°C(77°F)



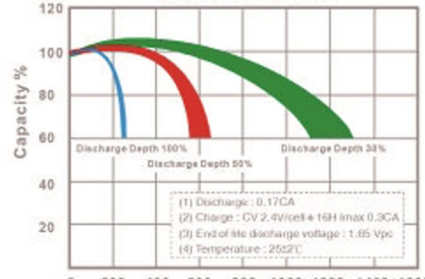
Capacity Retention Characteristic



Trickle (or float) Service Life



Cycle Service Life



Constant Current Discharge Characteristics : A (25°C)

F.V/Time	10MIN	15MIN	30MIN	1HR	2HR	3HR	4HR	5HR	8HR	10HR	20HR
1.60V	166.8	125.6	73.4	43.1	25.8	19.0	15.4	13.1	8.76	7.46	3.83
1.65V	161.8	122.3	71.8	42.3	25.4	18.7	15.3	12.9	8.67	7.39	3.80
1.70V	155.3	118.0	69.7	41.2	24.9	18.4	15.0	12.7	8.55	7.30	3.76
1.75V	146.9	112.4	66.9	39.9	24.3	17.9	14.7	12.4	8.39	7.17	3.70
1.80V	136.1	105.1	63.3	38.0	23.4	17.3	14.2	12.1	8.19	7.00	3.63
1.85V	122.6	96.0	58.7	35.7	22.3	16.6	13.6	11.6	7.91	6.78	3.53

Constant Power Discharge Characteristics : WPC (25°C)

F.V/Time	10MIN	15MIN	30MIN	1HR	2HR	3HR	4HR	5HR	8HR	10HR	20HR
1.60V	287.8	222.9	135.4	81.8	49.7	36.8	30.1	25.5	17.4	14.9	7.65
1.65V	286.6	221.6	134.4	81.1	49.3	36.5	29.9	25.4	17.2	14.8	7.60
1.70V	278.1	215.7	131.1	79.4	48.5	35.9	29.4	25.0	17.0	14.6	7.53
1.75V	267.8	208.4	127.2	77.1	47.4	35.2	28.9	24.6	16.7	14.4	7.43
1.80V	252.4	197.7	121.5	73.9	45.9	34.2	28.1	24.0	16.4	14.0	7.29
1.85V	231.5	183.0	113.8	69.9	43.9	32.8	27.1	23.1	15.9	13.6	7.11

(Note) The above characteristics data are average values obtained within three charge/discharge cycle not the minimum values.